

Specsavers

Specsavers Store Waste Handbook



Specsavers

First Mile is the new waste provider for Specsavers across the UK. It's fantastic to have you on board!

This handbook has best practices on how to get set up to recycle as much as possible at your store.

If you need any support you can contact us on 0333 300 3448 or email customers@thefirstmile.co.uk.

We look forward to being your waste provider!

Best Practices

The benefits of recycling



Resource conservation



Energy savings



Avoid carbon emissions



Job creation



Waste reduction

How to be a recycling hero



Step 1 Optimise your workplace setup



Step 2 Empower your staff to recycle



Step 3 Avoid contamination



1. Optimise your workplace setup

Tailor recycling solutions to your industry

With First Mile you have general waste, mixed recycling, food recycling, glass recycling and cardboard recycling.

Strategically place recycling stations

Set up bins front of house as well as in staff places. First Mile can provide bins on request for your store.

Signage and consistent communication

Use First Mile's colour-coded bins and posters to help staff sort waste easily. Find your posters in your online welcome hub.

2. Educate and empower staff

Offer learning approaches from day one

Engage staff with workshops, webinars, and resources to align them with your green vision.

Create a culture of green champions

A green team boosts sustainability by uniting employees to discuss and drive eco-friendly initiatives.

Share Recycling Achievements

Keep up motivation by sharing your recycling achievements with staff. You can find all of your carbon data and recycling rates in your First Mile customer portal.

Recognise employees

Recognising employees for sustainability efforts reinforces your eco message and boosts motivation through shout-outs, newsletters, or team meetings.

3. Avoid contamination

Contamination can be:

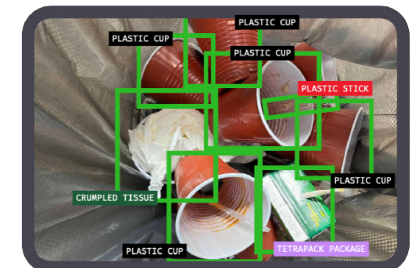
- Non-recyclables in bins
- Items placed in the wrong bins
- Soiled items or liquids in your recycling



Contaminated sacks can ruin a truckload of recycling, meaning nothing can be recycled.



Contamination may also result in warnings and fines from your waste provider.



How to avoid contamination



Empty and scrape empty food & drink containers



Check product labels before recycling



Ensure you have a separate bin for food waste



Read bin labels and posters.



Conduct bin audits to keep recycling on track.








Our helpful video looks at what materials can go into each bin and how to deal with contamination. ([click here to see the video](#))



Bin Set up

Core Streams

-  General Waste
-  Dry Mixed Recycling
-  Food Recycling
-  Glass Recycling
-  Cardboard Recycling

Workplace Set up

Consistency

Use the same bins & First Mile branding throughout your building.

Availability

Make it easy to recycle with more recycling bins.

Visibility

Use First Mile posters & labelling to ensure correct decisions.

Set up Check List

Step 1

Make sure internal bins are available throughout your store with clear posters displayed to show what can and can't go in.

Step 2

Line your bins with the correct First Mile sacks for each service. Identify what other materials are wasted the most, First Mile can help implement Single Stream Services to divert from General Waste.

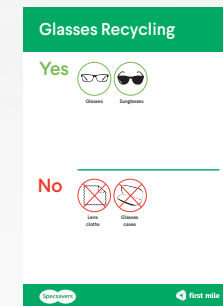
Step 3

Collection schedule - Check with your First Mile account manager for area coverage and recommended collection schedule (see customer portal guide).

Doing these steps will give a higher recycling rate, reduce costs and help fight climate change.

Bin Range

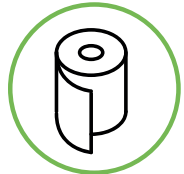
First Mile provides a diverse selection of bins designed to be the most suitable and cost-effective solution.



General Waste



Yes



Blue roll



Tissues



Polystyrene



Contaminated packaging

No



Batteries



Hazardous



Electronics



Hardware

Dry Mixed Recycling



Yes



Paper



Single use plastic



Cans



Cardboard

No



Food waste



Paper towels



Takeaway cups



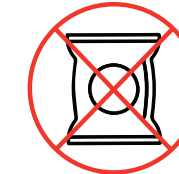
Glass



Compostables



Flexi-plastic

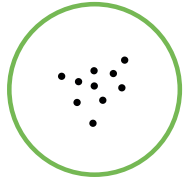


Crisp packets

Food Recycling



Yes



Coffee grounds



Shells & bones



Food waste



Tea bags

No



Liquids



Food packaging



Compostable packaging

Glass Recycling



Yes



Glass bottles & jars (with lids)

No



Glassware



Broken glass



Bottle tops

Cardboard Recycling



Yes



Packaging boxes



Folders



Carton cardboard



Chemo cardboard



Graphic cardboard



Drawing cardboard



Corrugated cardboard

No



Plastic tiles



Stone paper



Art board



General waste



Composite

Waste Process at Specsavers

Your waste sacks

It is important to ensure the correct sacks are used for the correct waste stream. Smaller internal bin stickers will be available to you, which can go inside your bin, these aren't directly facing, but can be seen when opening to act as a prompt to ensure the right sacks are being used for the correct waste stream.

How to utilise sacks

When emptying your bin, ensure the waste sacks are being fully utilised by checking that they are full.

GENERAL WASTE Use blue sacks only 	MIXED RECYCLING Use clear sacks only 	FOOD RECYCLING Use clear sacks only 	CARDBOARD RECYCLING Use green sacks only 
GLASS RECYCLING Use white sacks only 			

Bin room overview

Core services: Collected from core waste streams found in building: General waste and mixed recycling.

Adhoc services: Collected from core waste streams found in building: Food, glass, cardboard.

Waste Journey

Where does my waste go?

As well as nothing being sent to landfill, we do not send any waste outside of the UK.

All waste, where possible, is recycled and made back into products to be used again.



- 1 Sacks are ordered and delivered via First Mile for your dedicated waste streams.
- 2 Sacks are placed into the bins with the correct corresponding waste streams.
- 3 Once the sacks are full and have been fully utilised, the sacks are transported to the waste room.
- 4 The sacks are then ready to be placed into the correct bin. Each bin will be labelled accordingly.
- 5 Your weight data will automatically be uploaded on to your reporting suite on the First Mile portal.



Additional Information

Waste reduction tips

Bringing food in from home to avoid packaging waste

Watch videos & tutorials etc

Use a reusable coffee cup

Use a reusable & refillable water bottle

Training & awareness

Attend the regular webinars & training provided to Specsavers

Refer to your waste handbook and reach out if you need support

Q&A

Where can I order my waste sacks?

You can order your waste sacks via the first mile portal using your login.

Where can I purchase new waste bins?

You can order these through The First Mile team, please get in touch at customers@thefirstmile.co.uk

What do I do if I have an Ad-hoc waste stream?

Please place in the designated area in the northern waste store room and Specsavers building management team will arrange collection.

How do I access my sustainability reporting for waste?

You can access all of your reporting and data via the First Mile Portal.

What should I do if I'm not sure if an item or material can be recycled?

Check out the First Mile posters for a quick guide on what can and can't go in the waste stream.

What should I do if I notice contamination in any bins in Specsavers?

Please inform a team member or a member of the building team, its important that we reduce and remove any contamination to ensure the best possible recycling from the building.

Contact us

Customer Service

0333 300 3448

customers@firstmile.co.uk

